

An association for woodworkers of all skill levels to share their common interest

The SAWdust News



March 2014

<http://www.nwwoodworkers.org>

The Next Meeting

Date: *Thursday, March 27, 2014, 6:30 PM*

Location: *Rockler Woodworking – Northgate*
832 NE Northgate Way
Seattle, WA 98125

Program Highlights: 1) Flat Relief Carving demonstration by Badger Roulett
2) Odie's finishes demonstration by Bob Julin

February 2014 Meeting Highlights



Our inaugural meeting at the new **Rockler Northgate** facility was held on Thursday, February 27, 2014. We really appreciated the warm welcome and support offered to us by our hosts, Manager **Lawrence King** and his staff. Thanks for the opportunity to hold our meeting at your wonderful new store, for all of the refreshments provided, generous gift cards for our Raffle, the setup of the seating and tables, and keeping your

store open beyond your normal closing hours to accommodate our meeting. We thoroughly enjoyed our meeting here and hope this will be the first of many we will be able to hold at your location. Thanks, Lawrence and staff, for making us so welcome!

We were pleased to have an attendance of 23 members and guests. We are especially glad that this location allowed some of our northern members to attend without having to negotiate all of the traffic usually encountered when they visit our South Seattle meeting location. Thanks for joining us, folks! We look forward to seeing you again soon!

Program Presentation

(Please see the Photo Gallery on Page 7 for additional photos)



As arranged by Lawrence King, the Rockler store Manager, we were treated to a presentation by **Steve Herman**, local manufacturing representative for the product line offered by Kreg Tool, and specifically the Kreg Pocket Hole tool family.

Steve described his visit to the Kreg Tool facility in Huxley, Iowa. They are a small company with about 100 employees employed from the local community. He emphasized the Kreg Tool company commitment to providing high quality tools and superior factory service.

He explained the various configurations of the Kreg pocket tools, including the K3, K4, and K5 series tools. He emphasized the innovations of their latest K5 configuration, which included moving the clamp locking handle to the front of the jig for improved access, the adjustable thickness clamping features, the quick release pin for removal of the drill block, and the ease of setting the drill depth stop using the integral markings on the tool. A dust collection port is also provided to evacuate the drilling debris from the pocket holes.



Steve gave us a demonstration of the setup and fabrication of a simulated face frame joint using the Kreg K5 pocket hole system. The joining process steps included setting the depth stop collar on the drill bit, using markings on the tool, placing and clamping the part in the jig, moving the backup stop against the part and clamping from the front with the built in toggle clamp mechanism. The two pocket screw holes were drilled with a cordless drill using the specialized HSS step drill bit which is part of the tooling package. He also emphasized that it is important to allow the drill motor to come up to full speed before contacting the workpiece to improve the smoothness of the fastener hole and minimize tearout.



After drilling, the part with the pocket holes was positioned tightly against the mating face frame member and clamped securely with a long reach Kreg toggle clamp having their innovative self-adjusting feature and large contact pads to ensure that the two parts were held together with their surfaces aligned. Then a long square drive bit was chucked in the drill motor and used to drive the two pocket screws to secure the joint. Steve mentioned how important it is to use quality driver bits which have a very long service life. Also of interest was Steve's comment that Kreg offers a free mail-in sharpening service for their pocket hole drill bits – a great customer service perk!

Steve also displayed several different pocket joint configurations that would be useful for furniture and cabinetry applications. One of the demo simulated face frames had both matching and contrasting wood inserts installed in the pocket hole grooves to mask the holes.



He also showed us the Kreg Deck Jig and set of accessories which allows the drilling and fastening of deck boards constructed in such a way that the fasteners are all but invisible – another useful feature of the Kreg family of tools. He also showed a simulated deck panel which illustrated the use of this tooling for wooden or composite deck fabrication.



We enjoyed Steve Herman's informative presentation and noted that it promoted a lot of lively discussion and questions from among the members. We thank Lawrence King for having arranged it for us – another proactive benefit so generously provided for us by our hosts. Thanks, Lawrence!

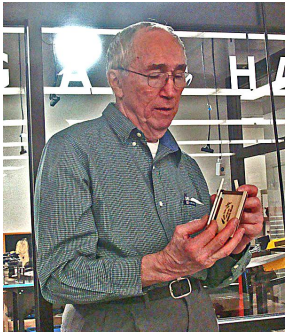
Show 'N' ' Tell

(Please see the Photo Gallery on Page 7 for additional photos)



Dan Ford brought a beautifully crafted maple night stand (one of a pair!) having curly maple raised inset panels, wenge accents and dovetailed base members. He mentioned that he had used an inlay router bit set recommended by **Allen McCall** to make the inlay pockets and matching inserts and was amazed at how well the parts fit together. He gave the credit to the router bit set, but I suspect his skill and evident attention to detail had a lot to do with the result! Great job, Dan. Thanks for sharing the project with us!



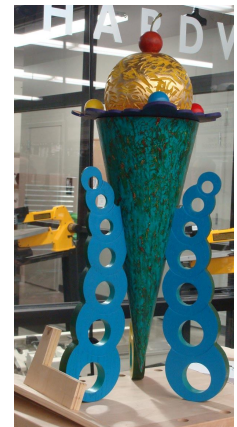


Charlie Culler showed an interesting set of business card holders he had made based upon an article in one of the woodworking magazines. He described the unique processes and jigs he used to make the small parts and especially those required for the hinged covers. He said making the hinges was the hardest part of the project. Charlie used quite a large variety of wood species for his project, including curly maple, cocobola, bolivian rosewood, cherry, bass wood, bubinga, walnut, zebra wood, birdseye maple, and poplar. A very impressive, finely crafted project – which obviously required a lot of TLC and PATIENCE! Good job, Charlie!!



Chris Green displayed another of his recent series of unique and colorful creations entitled “A Cherry on Top”. As you can see from the photos at the end of this newsletter, this artistic woodworking creation included several features different from the other members of the series including a rounded, conical center piece, one-piece solid wood legs having a series of interconnected circles of different thicknesses each having a different hole size. He noted that the project had no straight edges! It was

interesting to note the different woodworking processes, jigs, tooling, and equipment used for the project. Another outstanding creation, Chris!



Chris made good use of the digital video monitors, mounted on the front of the Rockler store demonstration area, to show us intermediate stages in the construction of his project. The Steering Committee has been looking for an opportunity to try this display medium as an aid to illustrating a presentation, so we were glad that this new, progressive Rockler facility provided the equipment to facilitate this opportunity. Having seen it in action, I think the members appreciated the usefulness of this medium and how easy it was to view from any of the seating areas. (Note that most of the close-ups of Chris’ project in the Photo Gallery were **photos of the video monitor displays!**) We hope to be able to make use of the video monitors for future

presentations. We also encourage our members to use their digital cameras to document the in-process steps of their projects to better illustrate the techniques, tooling, jigs, intermediate steps, and specialized operations required to accomplish their projects.



Eric Iverson, one of our guests, displayed a uniquely patterned cutting board he had crafted from walnut, maple, and paduak. Interestingly, he said he develops his patterns using a Microsoft Excel spreadsheet program! He noted that he has recently switched from finishing his cutting boards with mineral oil to a new product carried by Rockler called Odies Oil. He said he likes the slight shine this product produces and noted that it is food safe for use on cutting boards and similar projects – says it smells good, too! Nice job, Eric!



Brochure Holder Project



Herb Stoops brought two of the brochure holders he had made in his shop. The first one he described as being a somewhat prototype rustic design and construction – maybe in keeping with the surroundings way down South in Auburn where he resides..... ☺ He did mention that he had some difficulties interpreting the drawing, but got those resolved. However, he reported that he had some construction difficulties as well – no doubt related to the materials involved, inclement weather, squirrely barometer, thunderstorms in Tibet, alignment of the planets, etc. but of course in no way related to the skill or acumen of the builder..... ☺

Herb said he wasn't going to bring the prototype to the meeting, but Allen convinced him to bring it along to show that some of our woodworking endeavors don't always work out quite like we planned them – especially when impacted by cosmic and other forces beyond our control. When he displayed the rustic brochure holder, I did notice that it leaned a tad to one side and seemed to wobble a little, which I assumed was just part of the rustic theme. But on closer inspection, I was relieved to detect that the table had an uneven spot on the top where the project was resting, accounting for the perceived discrepancies! That said, he bravely passed the rustic prototype around to the delight of the group – from whom I heard many a chuckle of appreciation! Somehow I get the feeling that Herb was pulling our leg with this “Rustic Prototype”..... ☺

But then to our delight, Herb brought out his second brochure holder – a lovely item made of resawn curly maple. He said he finished it natural with shellac, topcoated it with 4 coats of Minwax acrylic polyurethane, sanded with 400 grit paper between coats, and finished off with a coat of Carnuba wax. What a beautifully executed project, Herb – a great job that truly represents the kind of woodworking skill and attention to detail that exemplifies the Association!!



However, even with the two fine brochure holders made by Allen and Herb, we are still in need of a few more members to make some more holders for us to use to display our Association brochures at our sponsors' facilities. **Scott Wilson** mentioned that he had made one of the holders and it was awaiting finishing. Thanks Scott – hope to see it at the next meeting. Without too much arm twisting, **George Knutson** and **Dan Ford** each committed to making a brochure holder which should be ready to bring to our next meeting in March. Thanks, guys!

NWWA Banner Project

Bill Bond brought along our newly purchased NWWA Banner which we intend to display when appropriate to advertise our presence at both indoor and outdoor events. Bill even took the time to turn some unique end caps for the banner storage tube to further enhance the project. Much to the delight of the members, Bill unfurled the banner and displayed it to the group. There was universal admiration and approval for the project. Thanks, Bill, for all your hard work to make this project happen! We plan to have it on display at our next meeting here at this wonderful new Rockler facility.

Raffle

Several woodworking books were donated by **Herb Stoops** for the Raffle. So we should have a bunch of smarter members by the next meeting – be ready guys, there may be a pop quiz.....!! ☺ A \$25 Rockler gift card was a much prized item as well. **Lawrence King** also donated three more \$25 Rockler gift cards which will be raffled at future meetings. Thanks, Lawrence!

And last but not least, a special thanks again to **Chris Yee**, for taking the meeting notes, and to **Scott Wilson**, for taking an excellent set of photos of the meeting. We really appreciate your willingness, Chris, to help out in the absence of our regular Secretary, Jan Erickson, and for your “Johnny on the Spot” willingness to step up at a moment’s notice and be our photographer, Scott, in the absence of Steve Krauss. Great job guys!! Thanks so much for your help.

Upcoming Events

Our next meeting will be held again at the new Seattle Rockler Northgate store, on Thursday, March 27, 2014 at 6:30PM. Come early and browse the aisles filled with woodworking goodies! These folks are one of our valued sponsors, so please patronize them with your business.

February 2014 Photo Gallery

Photos by Scott Wilson



Enjoying a great Kreg Pocket Hole presentation by Steve Herman



A fine selection of treats provided by Rockler Woodworking



Typical pocket screw installation



Typical pocket hole screw location at midpoint of material thickness



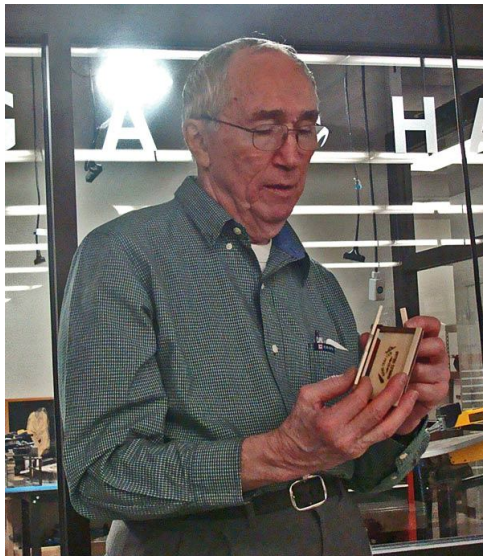
Kreg Clamp used to secure and align joint surfaces



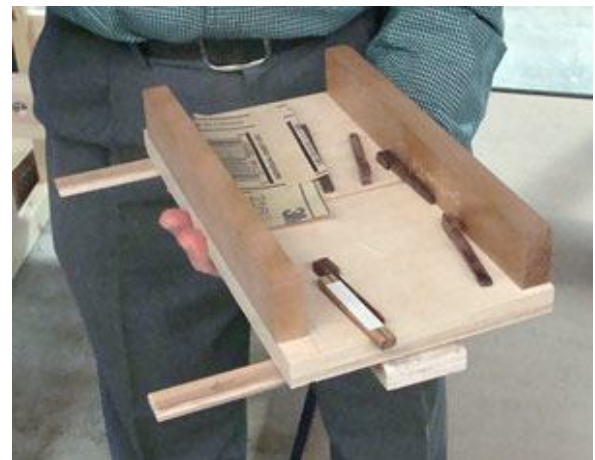
Kreg Product Catalog



Kreg Pocket Hole Instructional DVD



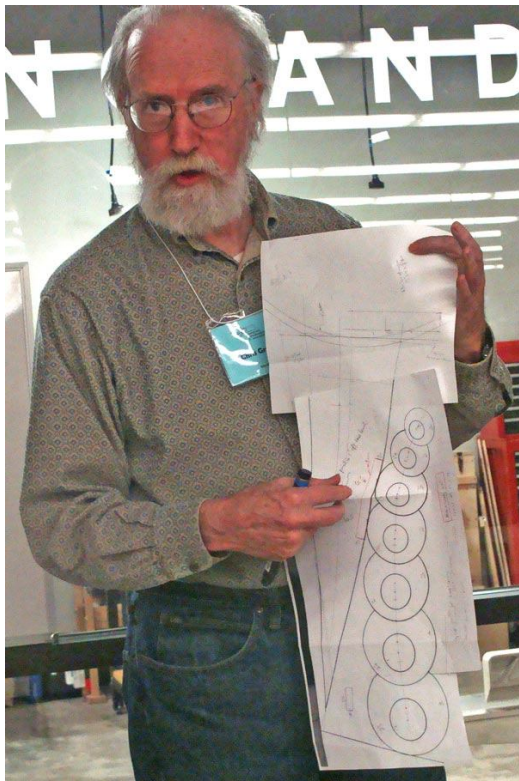
Charlie Culler explaining his project



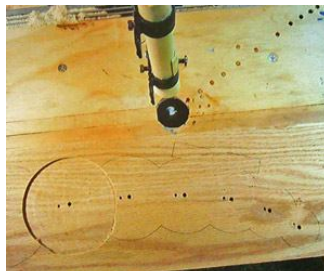
Charlie's project crosscutting sled



Charlie's business card holder



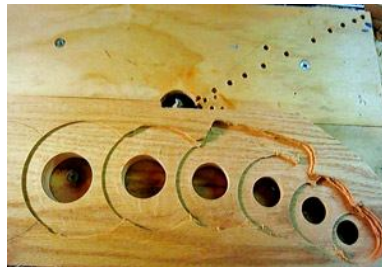
Chris Green explaining his project



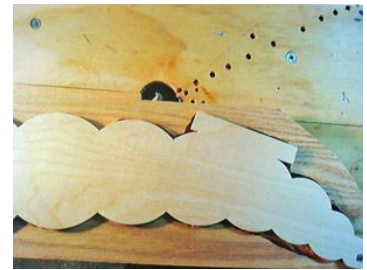
Initial circular pad



Overlapping circular pads



Curved hole pattern



Routing template



Preliminary routed leg periphery



Tapered router bit for shaping cone segments



Custom router base



Routing leg mortises



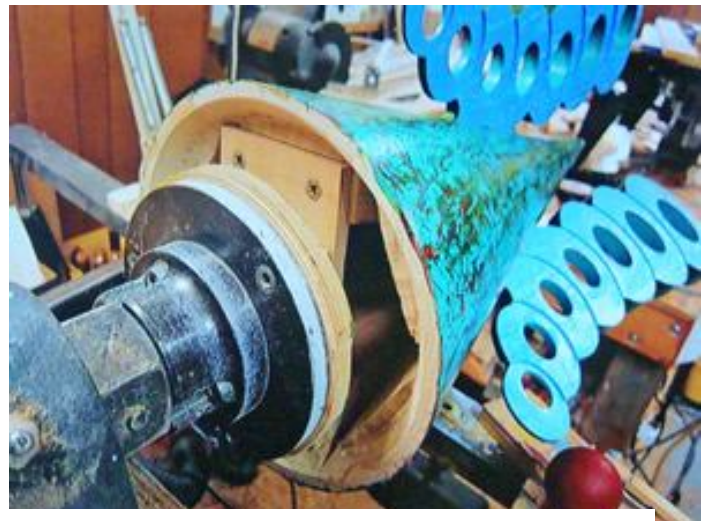
Cone segment with routed leg mortise



Assembling the center cone glue up



Supporting the cone on the lathe tailstock



Turned and finished cone on the lathe

Northwest Woodworkers Association Sponsors

We appreciate the generous support provided by our NWWA sponsors, from providing member discounts on purchased items to providing state of the art venues for us to conduct our monthly meetings. Thank you, sponsors!

Crosscut Hardwoods

4100 – 1st Avenue South
Seattle, WA 98134
10% Member Discount

Edensaw Woods

8032 S. 194th St.
Kent, WA 98032

Rockler Woodworking and Hardware – Northgate

832 NE Northgate Way
Seattle, WA 98125
10% Member Discount (not valid on sale items and power tools)

Rockler Woodworking and Hardware – Tukwila

345 Tukwila Parkway
Tukwila, WA 98188
10% Member Discount (not valid on sale items and power tools)

Woodcraft Supply

5963 Corson S.
Seattle, WA 98108
10% Member Discount (not valid on sale items, power tools and workbenches)

Northwest Woodworkers Association Contacts

Membership—Allen McCall

Treasurer—Chris Green

Secretary—M. Erickson

Raffle— Herb Stoops

Webmaster--- Tom Howorth thoworth@gmail.com

Newsletter Editor--- Paul Stoops pmstoops@comcast.net 253-804-3209

Photographer— Scott Wilson

Steering Committee

Bill Bond williamcbond@comcast.net

Chris Green chrisandrenegreen@gmail.com

Allen McCall allen.mccl@gmail.com

Herb Stoops hcstoops@comcast.net

Paul Stoops pmstoops@comcast.net

We encourage our members to contact any of the above individuals with questions, comments, or items that may be of interest to the membership.

In addition, please visit our website and forum:

<http://www.nwoodworkers.org>